

||||>> HENRAD

STELRAD RADIATOR GROUP

Any room.
Any home.
Any lifestyle.



Contents

03/05	Arno Towel Rail Range
04	- Arno Single
04	- Arno Double
05	- Arno Curved Towel Rail
06	Verona Towel Rail
07/12	Verona Range
08	- Verona Single Plane
08	- Verona Double Plane
09/10	- Verona Vertical
11	- Verona Lo-Line
12	- Verona Slimline
13/14	Column Range
14	- Column 2
14	- Column 2 Vertical
14	- Column 3
14	- Column 4
15/16	- Column Concept
17/18	Everest Line
19/20	Plan
21/22	Alto Line
23/24	Compact
25/26	LST Standard
27/28	Colour Range
29	Glossary

Designer warmth with contemporary flair

Radiators play such an important role in today's lifestyles. They are the focal point of many rooms, so they should reflect your aspirational needs for good looks as well as a comfortable environment. Henrad is the radiator range to satisfy all your expectations.

As part of the Stelrad Radiator Group, Henrad has a highly respected pedigree. Within the current portfolio, the Compact steel panel range is unsurpassed, offering over 140 variants to meet your specific needs. And, representing the demand for leading edge design, the Verona, Everest Line, Plan, Alto Line and Column styles are already well established.

We have some stunning products, including the Arno Single, Arno Double, Arno Curved and Verona Towel Rails to give you even more choice for your home. Henrad's LST Standard is a low surface temperature radiator for safety conscious environments. There are also plenty of variants that now include the option of stylish modern colourways to further enhance your favourite rooms.

Henrad – the radiator for choice, quality and guaranteed value.

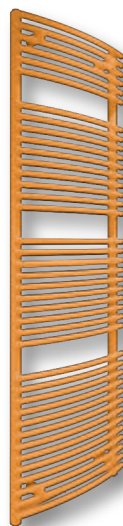
Arno Single Towel Rail



Arno Double Towel Rail



Arno Curved Towel Rail



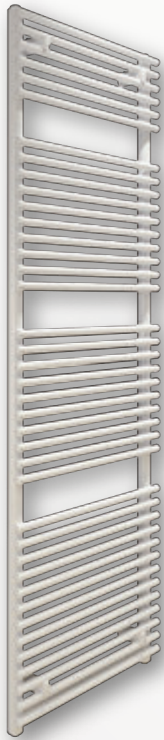
Verona Towel Rail



Arno Towel Rail Range



Elegant tube on tube design consisting of a tight array of slim tubes makes the Arno range an easy choice for any bathroom or kitchen.



Working pressure:
Tested to withstand 6 bar

For technical and installation
information visit our website
www.henrad.co.uk/downloads



Arno Single

Height mm	Length mm	Henrad Code	UIN Colour*	Heat emissions	
				Watts	Btu/hr
792	450	417902450	417902451	408	1392
	500	417902500	417902501	452	1542
	600	417902600	417902601	540	1842
	750	417902750	417902751	672	2293
1088	450	411002450	411002451	560	1911
	500	411002500	411002501	615	2098
	600	411002600	411002601	725	2474
	750	411002750	411002751	890	3037
1680	450	411602450	411602451	849	2897
	500	411602500	411602501	929	3170
	600	411602600	411602601	1090	3719
	750	411602750	411602751	1331	4541
1976	450	411902450	411902451	985	3361
	500	411902500	411902501	1080	3685
	600	411902600	411902601	1271	4337
	750	411902750	411902751	1557	5312

Btu/hr @ $\Delta t50^{\circ}\text{C}$

Arno Double

Height mm	Length mm	Henrad Code	UIN Colour*	Heat emissions	
				Watts	Btu/hr
792	450	427902450	427902451	593	2023
	500	427902500	427902501	657	2242
	600	427902600	427902601	787	2685
	750	427902750	427902751	982	3351
1088	450	421002450	421002451	775	2644
	500	421002500	421002501	860	2934
	600	421002600	421002601	1030	3514
	750	421002750	421002751	1287	4391
1680	450	421602450	421602451	1200	4094
	500	421602500	421602501	1327	4528
	600	421602600	421602601	1583	5401
	750	421602750	421602751	1967	6711
1976	450	421902450	421902451	1409	4808
	500	421902500	421902501	1556	5309
	600	421902600	421902601	1852	6319
	750	421902750	421902751	2296	7834

Btu/hr @ $\Delta t50^{\circ}\text{C}$

Colour options available, see page 27

Tube Dimensions



*Price of coloured radiators are available
on request.

When a coloured radiator has been ordered it cannot
be cancelled or returned. All coloured radiators have
up to an 8 week lead time from date of order.

Arno Curved Towel Rail



Colour illustrated Dove grey RAL ML1 10

Arno Curved Towel Rail

Height mm	Length mm	Henrad Code	UIN Colour*	Heat emissions	
				Watts	Btu/hr
792	496	447902496	447902497	452	1542
	595	447902595	447902596	540	1842
1088	496	441002496	441002497	615	2098
	595	441002595	441002596	725	2474
1680	496	441602496	441602497	929	3170
	595	441602595	441602596	1090	3719
1976	496	441902496	441902497	1080	3685
	595	441902595	441902596	1271	4337

Btu/hr @ $\Delta t 50^{\circ}\text{C}$

Colour options available, see page 27

*Price of coloured radiators are available on request.

When a coloured radiator has been ordered it cannot be cancelled or returned. All coloured radiators have up to an 8 week lead time from date of order.

Tube Dimensions



Working pressure:
Tested to withstand 6 bar



For technical and installation
information visit our website
www.henrad.co.uk/downloads



Verona Towel Rail

The Verona Towel Rail offers a stunning alternative to tubular towel rails. Providing a contemporary solution to a wide range of building applications.

Verona Towel Rail

Height mm	Length mm	Henrad Code	UIN Colour*	Heat emissions	
				Watts	Btu/hr
796	450	437902450	437902451	369	1259
	600	437902600	437902601	483	1648
1121	450	431102450	431102451	503	1716
	600	431102600	431102601	658	2245
1446	450	431402450	431402451	639	2180
	600	431402600	431402601	834	2846
1706	450	431702450	431702451	749	2556
	600	431702600	431702601	975	3327

Btu/hr @ $\Delta t 50^{\circ}\text{C}$

Colour options available, see page 27

*Price of coloured radiators are available on request.
When a coloured radiator has been ordered it cannot be cancelled or returned.
All coloured radiators have up to an 8 week lead time from date of order.

Tube Dimensions



Working pressure:
Tested to withstand 4 bar



For technical and installation
information visit our website
www.henrad.co.uk/downloads



Colour illustrated Pastel orange RAL A2003



Verona Range



Verona Double Plane

Offering visual appeal combined with advanced technology, the Verona provides a contemporary solution for a huge range of applications

The single and double plane radiators allow you to choose the right output for any situation.

Verona Single Plane



Verona Single Plane

Height mm	Length mm	Tap Centres	Henrad Code	Heat emissions	
				Watts	Btu/hr
588	500	512	248363	500	1706
	600	612	248364	599	2044
	700	712	248365	699	2385
	800	812	248366	799	2727
	1000	1012	248368	999	3410
	1200	1212	248370	1199	4092
	1400	1412	248371	1399	4775
	1600	1612	248372	1598	5452
	1800	1812	248373	1798	6135
	2000	2012	248374	1998	6817

Btu/hr @ $\Delta t50^{\circ}\text{C}$

Verona Double Plane



Verona Double Plane

Height mm	Length mm	Tap Centres	Henrad Code	Heat emissions	
				Watts	Btu/hr
588	600	612	248415	992	3385
	700	712	248416	1158	3951
	800	812	248417	1323	4514
	900	912	248418	1489	5080
	1000	1012	248419	1654	5643
	1200	1212	248421	1985	6773
	1400	1412	248422	2316	7902
	1600	1612	248423	2646	9028
	1800	1812	248424	2977	10158
	2000	2012	248425	3308	11287

Btu/hr @ $\Delta t50^{\circ}\text{C}$

Working pressure:
Tested to withstand 4.6 bar



For technical and installation
information visit our website
www.henrad.co.uk/downloads



Verona Vertical



Verona Vertical

With a choice of five types and a variety of sizes and outputs, the Verona allows extensive flexibility of siting, whilst breaking new barriers in heating efficiency.

Make a statement with Verona Vertical! Combining modern style and appeal that will fit in any new or existing space.

Verona Vertical



Verona Vertical

Height mm	Length mm	Tap Centres	Henrad Code	Heat emissions Watts Btu/hr	
1800	440	440	248340	780	2662
	588	588	248341	1040	3550
	736	736	248342	1300	4436
2000	440	440	248343	870	2969
	588	588	248344	1160	3959
	736	736	248345	1450	4947

Btu/hr @ $\Delta t 50^{\circ}\text{C}$

Working pressure:
Tested to withstand 4.6 bar



For technical and installation
information visit our website
www.henrad.co.uk/downloads



Verona Lo-Line

The modern Verona Lo-Line radiator has been specifically designed to be sited under window locations.



Verona Lo-Line

Height mm	Length mm	Tap Centres	Henrad Code	Heat emissions Watts Btu/hr	
144	800	812	248581	530	1809
	1400	1412	248311	928	3166
	2000	2012	248314	1326	4980
	2200	2212	248315	1459	4979
292	2200	2212	248323	2468	8423

Btu/hr @ $\Delta t50^{\circ}\text{C}$

Working pressure:
Tested to withstand 4.6 bar



For technical and installation
information visit our website
www.henrad.co.uk/downloads



Verona Slimline

The practical design of the Verona Slimline radiator is ideally suited to smaller spaces to deliver maximum heat output.



Verona Slimline

Height mm	Length mm	Tap Centres	Henrad Code	Heat emissions Watts Btu/hr	
1800	320	320	248300	872	2976
	440	440	248301	1199	4092
	520	520	248302	1417	4836
	640	640	248303	1744	5952
2000	320	320	248304	978	3338
	440	440	248305	1344	4587
	520	520	248306	1589	5423
	640	640	248307	1956	6676

Btu/hr @ $\Delta t50^{\circ}\text{C}$

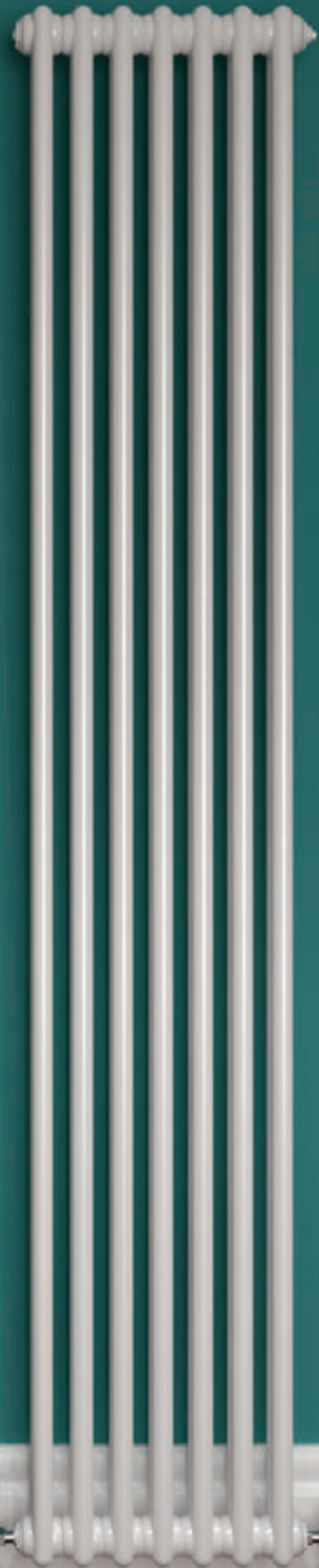
Working pressure:
Tested to withstand 4.6 bar



For technical and installation
information visit our website
www.henrad.co.uk/downloads



Column Range



The most modern execution of a traditional concept, this classic style brings innovation and reliability to a high performance design.

Vertical and horizontal options offer a modern alternative to a traditional panel radiator, and will enhance both contemporary and traditional settings.

Column 2

Height mm	Length mm	Henrad Code	Heat emissions	
			Watts	Btu/hr
500	628	263012	499	1703
	628	263028	589	2010
600	858	263029	815	2782
	1042	263030	997	3403
	1272	263031	1223	4174

Btu/hr @ $\Delta t50^{\circ}\text{C}$

Column 3

Height mm	Length mm	Henrad Code	Heat emissions	
			Watts	Btu/hr
500	444	263016	464	1583
	858	263018	929	3171
	1042	263019	1135	3874
	1272	263020	1393	4754
	1456	263021	1600	5459
	1870	263022	2064	7044
600	444	263032	548	1870
	628	263033	792	2703
	858	263034	1096	3741
	1042	263035	1340	4573
	1272	263036	1644	5611
	1456	263037	1888	6444
750	1870	263038	2436	8314
	858	263044	1337	4563
	1042	263045	1635	5580
	1272	263046	2006	6844
	1456	263047	2303	7858

Btu/hr @ $\Delta t50^{\circ}\text{C}$

Column 2 Vertical

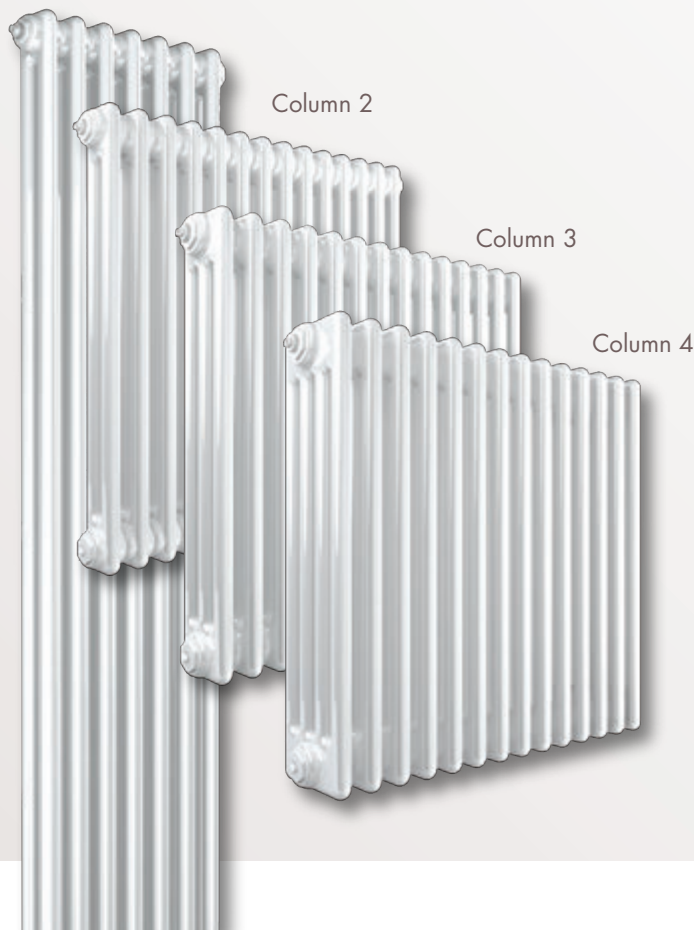
Height mm	Length mm	Henrad Code	Heat emissions	
			Watts	Btu/hr
1800	352	263054	868	2962
	444	263055	1116	3809
2000	352	263056	1197	4084
	444	263057	1242	4239

Btu/hr @ $\Delta t50^{\circ}\text{C}$

Due to production tolerances, the length of the product and therefore the tap centres could contain a variation of +/- 1.5% of the overall stated length.

Have you considered
Column Concept

Column 2 Vertical



Column 4

Height mm	Length mm	Henrad Code	Heat emissions	
			Watts	Btu/hr
500	858	263025	1217	4152
	1042	263026	1487	5074
	1272	263027	1825	6227
600	628	263040	1037	3538
	858	263041	1436	4900
	1042	263042	1756	5991
750	1272	263043	2155	7353
	628	263050	1266	4320
	858	263051	1753	5981
	1042	263052	2143	7312
	1272	263053	2630	8974

Btu/hr @ $\Delta t50^{\circ}\text{C}$

Working pressure:
Tested to withstand 8 bar



For technical and installation
information visit our website
www.henrad.co.uk/downloads



Column Concept



A new take on a timeless classic, Column Concept will add a touch of class to any room.

Available in Slate grey and in a range of popular sizes to suit most homes.

Henrad Column Concept in RAL A7015 Slate grey available from stock.

Column 4 Concept



Column 3 Concept

Height mm	Length mm	Henrad Code	Heat emissions	
			Watts	Btu/hr
600	628	263133	792	2703
	858	263134	1096	3741
	1042	263135	1340	4573
	1272	263136	1644	5611

Btu/hr @ $\Delta t50^{\circ}\text{C}$

Column 4 Concept

Height mm	Length mm	Henrad Code	Heat emissions	
			Watts	Btu/hr
600	628	263140	1037	3538
	858	263141	1436	4900
	1042	263142	1756	5991
	1272	263143	2155	7353

Btu/hr @ $\Delta t50^{\circ}\text{C}$

Working pressure:
Tested to withstand 8 bar



For technical and installation
information visit our website
www.henrad.co.uk/downloads



Available only in RAL A7015 Slate grey.

When a coloured radiator has been ordered it cannot be cancelled or returned.
All coloured radiators have up to an 8 week lead time from date of order.

Everest Line



With its flat front panel featuring pleasing horizontal lines the Everest Line radiator offers contemporary good looks, adding a new dimension to any room.

Everest Line Type 11



Working pressure:
Tested to withstand 8 bar



For technical and installation
information visit our website
www.henrad.co.uk/downloads



Everest Line Type 22



Have you considered
Plan

Everest Line Single Convector Type 11

Height mm	Length mm	Henrad Code	Heat emissions	
			Watts	Btu/hr
300	500	3031105	235	802
	1000	3031110	469	1601
	1500	3031115	704	2401
500	400	3051104	298	1017
	600	3051106	448	1530
	800	3051108	598	2040
	1000	3051110	746	2545
	1200	3051112	897	3060
	1400	3051114	1046	3570
	1600	3051116	1194	4075
	1800	3051118	1343	4584
600	400	3061104	348	1188
	600	3061106	522	1782
	800	3061108	696	2375
	1000	3061110	870	2969
	1200	3061112	1044	3563
	1400	3061114	1219	4158
	1600	3061116	1392	4751
	1800	3061118	1566	5345
	2000	3061120	1741	5939

Btu/hr @ $\Delta t50^{\circ}\text{C}$

Everest Line Double Convector Type 22

Height mm	Length mm	Henrad Code	Heat emissions	
			Watts	Btu/hr
300	500	3032205	465	1587
	1000	3032210	929	3171
	1500	3032215	1394	4796
500	400	3052204	555	1894
	600	3052206	833	2843
	800	3052208	1110	3788
	1000	3052210	1388	4737
	1200	3052212	1666	5686
	1400	3052214	1943	6631
	1600	3052216	2222	7580
	1800	3052218	2499	8526
600	400	3062204	640	2184
	600	3062206	961	3280
	800	3062208	1281	4372
	1000	3062210	1601	5464
	1200	3062212	1921	6556
	1400	3062214	2241	7649
	1600	3062216	2563	8744
	1800	3062218	2883	9836
	2000	3062220	3203	10928

Btu/hr @ $\Delta t50^{\circ}\text{C}$

Plan



Simplicity itself, the Plan range features a smooth, flat front panel with integrated top grille and side panels, providing a minimalistic, slimline, sleek and

modern appearance. Available in a range of sizes the Plan provides an instant level of sophistication to any room.

Plan Type 11



Working pressure:
Tested to withstand 8 bar



For technical and installation
information visit our website
www.henrad.co.uk/downloads



Plan Type 22



Have you considered
Verona

Plan Single Convector Type 11

Height mm	Length mm	Henrad Code	Heat emissions	
			Watts	Btu/hr
300	500	4031105	235	802
	1000	4031110	469	1601
	1500	4031115	704	2401
500	400	4051104	298	1017
	600	4051106	448	1530
	800	4051108	597	2040
	1000	4051110	746	2545
	1200	4051112	895	3060
	1400	4051114	1044	3570
	1600	4051116	1194	4075
600	1800	4051118	1343	4584
	400	4061104	348	1188
	600	4061106	522	1782
	800	4061108	696	2375
	1000	4061110	870	2969
	1200	4061112	1044	3563
	1400	4061114	1218	4158
	1600	4061116	1392	4751
	1800	4061118	1566	5345
2000	4061120	1741	5939	

Btu/hr @ $\Delta t50^{\circ}\text{C}$

Plan Double Convector Type 22

Height mm	Length mm	Henrad Code	Heat emissions	
			Watts	Btu/hr
300	500	4032205	465	1587
	1000	4032210	929	3171
	1500	4032215	1394	4756
500	400	4052204	555	1894
	600	4052206	833	2843
	800	4052208	1110	3788
	1000	4052210	1388	4737
	1200	4052212	1666	5686
	1400	4052214	1943	6631
	1600	4052216	2222	7580
600	1800	4052218	2499	8526
	400	4062204	640	2184
	600	4062206	961	3280
	800	4062208	1281	4372
	1000	4062210	1601	5464
	1200	4062212	1921	6556
	1400	4062214	2241	7649
	1600	4062216	2563	8744
	1800	4062218	2883	9836
2000	4062220	3203	10928	

Btu/hr @ $\Delta t50^{\circ}\text{C}$

Alto Line



The Alto Line radiator incorporates all the features of the Everest Line but with a vertical line design.

Alto Line



Alto Line

Double Convector Type 22

Height mm	Length mm	Henrad Code	Heat emissions	
			Watts	Btu/hr
1600	300	3162203	1026	3501
	500	3162205	1710	5835
1800	500	3182205	1845	6295

Btu/hr @ $\Delta t 50^{\circ}\text{C}$

Working pressure:
Tested to withstand 8 bar

For technical and installation
information visit our website
www.henrad.co.uk/downloads



Compact

With a slim profile and smooth, white finish, Compact radiators will blend into any room in the house, to provide guaranteed heating performance.



Compact

Single Convector Type 11 & Type 21
Double Convector Type 22

Working pressure:
Tested to withstand 10 bar



Have you considered
Everest Line



Type 11

Type 21

Type 22

For technical and installation information visit our website www.henrad.co.uk/downloads



SINGLE CONVECTOR TYPE 11



SINGLE CONVECTOR TYPE 21



DOUBLE CONVECTOR TYPE 22

Height mm	Length mm	SINGLE CONVECTOR TYPE 11			SINGLE CONVECTOR TYPE 21			DOUBLE CONVECTOR TYPE 22		
		Henrad Code	Heat emissions Watts	Btu/hr	Henrad Code	Heat emissions Watts	Btu/hr	Henrad Code	Heat emissions Watts	Btu/hr
300	500	2031105	255	868	2032105	373	1271	2032205	491	1675
	1000	2031110	509	1737	2032110	745	2542	2032210	982	3351
	1500	2031115	764	2605	2032115	1118	3813	2032215	1473	5026
	1600	-	-	-	-	-	-	2032216	1571	5362
	2000	2031120	1018	3473	2032120	1490	5084	2032220	1964	6701
450	400	2011104	302	1032	2012104	422	1440	2012204	548	1871
	500	2011105	378	1290	2012105	528	1800	2012205	686	2339
	600	2011106	454	1548	2012106	633	2160	2012206	823	2807
	700	2011107	529	1806	2012107	739	2520	2012207	960	3274
	800	2011108	605	2064	2012108	844	2880	2012208	1097	3742
	900	2011109	680	2322	2012109	950	3240	2012209	1234	4210
	1000	2011110	756	2579	2012110	1055	3600	2012210	1371	4678
	1100	2011111	832	2837	2012111	1161	3960	2012211	1508	5146
	1200	2011112	907	3095	2012112	1266	4320	2012212	1645	5613
	1400	2011114	1058	3611	2012114	1477	5040	2012214	1919	6549
	1600	2011116	1210	4127	2012116	1688	5759	2012216	2194	7485
	1800	2011118	1361	4643	2012118	1899	6479	2012218	2468	8420
	2000	2011120	1512	5159	2012120	2110	7199	2012220	2742	9356
	2200	2011122	1663	5675	-	-	-	2012222	3016	10291
	2400	2011124	1814	6191	-	-	-	2012224	3290	11227
2600	2011126	1966	6707	-	-	-	2012226	3565	12162	
2800	2011128	2117	7223	2012128	2954	10079	2012228	3839	13098	
3000	2011130	2268	7738	-	-	-	2012230	4113	14034	
600	300	2061103	294	1003	-	-	-	-	-	-
	400	2061104	392	1338	2062104	538	1836	2062204	693	2364
	500	2061105	490	1672	2062105	673	2295	2062205	866	2955
	600	2061106	588	2006	2062106	807	2753	2062206	1039	3546
	700	2061107	686	2341	2062107	942	3212	2062207	1212	4137
	800	2061108	784	2675	2062108	1076	3671	2062208	1386	4728
	900	2061109	882	3009	2062109	1211	4130	2062209	1559	5319
	1000	2061110	980	3344	2062110	1345	4589	2062210	1732	5910
	1100	2061111	1078	3678	2062111	1480	5048	2062211	1905	6501
	1200	2061112	1176	4013	2062112	1614	5507	2062212	2078	7092
	1400	2061114	1372	4681	2062114	1883	6425	2062214	2425	8273
	1600	2061116	1568	5350	2062116	2152	7343	2062216	2771	9455
	1800	2061118	1764	6019	2062118	2421	8260	2062218	3118	10637
	2000	2061120	1960	6688	2062120	2690	9178	2062220	3464	11819
	2200	2061122	2156	7356	-	-	-	2062222	3810	13001
2400	2061124	2352	8025	-	-	-	2062224	4157	14183	
700	400	2071104	447	1527	2072104	612	2088	2072204	784	2676
	500	2071105	559	1906	2072105	765	2610	2072205	981	3345
	600	2071106	670	2287	2072106	918	3132	2072206	1177	4015
	700	2071107	782	2668	2072107	1071	3654	2072207	1373	4684
	800	2071108	894	3049	2072108	1224	4176	2072208	1569	5353
	900	2071109	1005	3430	2072109	1377	4698	2072209	1765	6022
	1000	2071110	1117	3811	2072110	1530	5220	2072210	1961	6691
	1100	2071111	1229	4192	2072111	1683	5742	2072211	2157	7360
	1200	2071112	1340	4573	2072112	1836	6264	2072212	2353	8029
	1400	2071114	1564	5336	2072114	2142	7309	2072214	2745	9367
	1600	2071116	1787	6098	2072116	2448	8353	2072216	3138	10705
	1800	2071118	2011	6860	2072118	2754	9397	2072218	3530	12044
2000	2071120	2234	7622	2072120	3060	10441	2072220	3922	13382	
2600	2071126	2904	9908	-	-	-	-	-	-	

LST Standard



The LST Standard has been specifically designed to meet the highest standards for low surface temperature radiators.

The range meets the NHS guidance for 'safe hot water and surface temperature'. All radiators are finished with an anti-bacterial paint as standard.

LST Standard



- LST Standard gives you the option to specify controls.
- LST Standard has the option to reverse the attractive outer casing to suit the pipe layout.
- For peace of mind the paint finish is anti-bacterial.
- The LST Standard comes complete with all components required in one easy package.
- The internal emitter generates excellent heat outputs through convection.
- Tested to high standards, the emitter has a maximum working pressure of 116psi (8 bar) and conforms to BS EN 442.

Working pressure:
Tested to withstand 8 bar



For technical and installation information visit our website www.henrad.co.uk/downloads

LST Standard

Type K1

Casing Height mm	Casing Length mm	Henrad Code	Heat emissions	
			Watts	Btu/hr
500	560	145400	196	669
	560	145424	290	989
650	760	145425	435	1484
	960	145426	580	1979
	1160	145427	725	2474
	1360	145428	870	2968

Btu/hr @ $\Delta t50^{\circ}\text{C}$

LST Standard

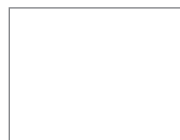
Type K2

Casing Height mm	Casing Length mm	Henrad Code	Heat emissions	
			Watts	Btu/hr
500	560	145416	348	1187
	760	145417	522	1781
	1160	145419	870	2968
650	560	145440	478	1631
	760	145441	717	2446
	960	145442	956	3262
	1160	145443	1195	4077
	1360	145444	1434	4893
	1560	145445	1673	5708
	1760	145446	1912	6524
	1960	145447	2151	7341
800	760	145465	922	3146
	960	145466	1230	4197
	1160	145467	1537	5244
	1360	145468	1844	6295
	1560	145469	2152	7343
	1760	145470	2459	8393
1960	145471	2767	9441	

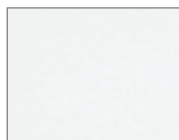
Btu/hr @ $\Delta t50^{\circ}\text{C}$

Colour Range

Natural Colour



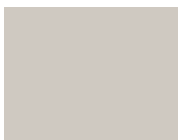
NT110
Papyrus white
510110



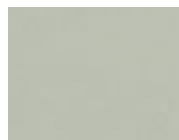
NT120
Pearl white
510120



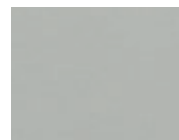
NT130
Champagne
510130



NT140
Beige
510140



NT150
Beige grey
510150



NT160
Pebble grey
510160



NT170
Quartz grey
510170



SN110
Cream white
530110



SN120
Cream
530120



SN130
Mocca
530130



SN140
Bordeaux
530140



SN150
Sepia
530150



SN160
Pale blue
530160



SN170
Black
530170

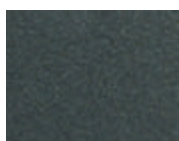
Metallic Colour



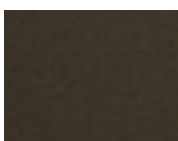
ML110
Dove grey
520110



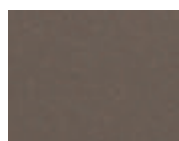
ML120
Titanium grey
520120



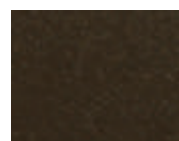
ML130
Blue grey
520130



ML140
Granite
520140



ML150
Cappuccino
520150



ML160
Terra brown
520160



ML170
Graphite black
520170

RAL Colour



A1004
Golden yellow
541004



A2003
Pastel orange
542003



A3002
Carmine red
543002



A3003
Robin red
543003



A5002
Ultramarine blue
545002



A6018
Yellow green
546018



A7001
Silver grey
547001



A7011
Iron grey
547011



A7016
Anthracite grey
547016



A7030
Stone grey
547030



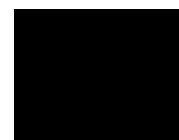
A7035
Light grey
547035



A8017
Chocolate brown
548017



A9003
Signal white
549003



A9005
Jet black
549005



A9016
Traffic white



A7015
Slate grey
*Only available for
Column Concept

The colours shown throughout the brochure are reproduced as accurately as this process will allow and can be made to order on the identified products.

Please Note: Colour options are available in the Arno Towel Rail Range and Verona Towel Rail only. Price of coloured radiators are available on request. When a coloured radiator has been ordered it cannot be cancelled or returned. All coloured radiators have up to an 8 week lead time from date of order.



Colour illustrated
Iron grey RAL A7011



Colour illustrated
Champagne RAL NT130




Colour illustrated
Signal white RAL A9003



Colour illustrated
Pale blue RAL SN160

Glossary

Btu/hr	British Thermal Unit per hour is the standard measurement used to state the amount of output of any heat generating device.
Watts	Is another measurement for heat output, 1 watt is equivalent to 3.412 Btu/hr.
Type 11	Also known as Type K1, is a type of radiator with 1 radiator panel and 1 set of convection fins.
Type 21	Also known as Type P+, is a type of radiator with 2 radiator panels and 1 set of convection fins.
Type 22	Also known as Type K2, is a type of radiator with 2 radiator panels and 2 sets of convection fins.
Δt	Refers to the difference in temperature between the water circulating in the central heating system and that of the ambient temperature. It is important to use the correct Δt when selecting your radiators, as the same radiator will have different outputs at different water temperatures.
$\Delta t50$	$\Delta t50$ is the UK standard, however Henrad also quote at lower levels for lower water temperature systems.
Heat loss	Is the amount of heat a room loses, it is therefore an important calculation when determining what size radiator is required to heat a room to the correct level.
Warranty	The warranty covers any defect that is attributable to a manufacturing, assembly or material fault, further details available on request.
	Is a set of International regulations related to quality management systems.
TBOE / BOE	Refers to which position the pipes are connected to the radiator, OE means opposite end i.e. 1 pipe on each side, TB is top bottom i.e. 1 pipe is connected to the top and 1 to the bottom, B is both pipes connected to the bottom.
	EN 442 is the European standard which defines the manufacturing standards for radiators and convectors which operate at temperatures of less than 120°C. The standard defines the type of steel which must be used, the type of pressure testing which must be carried out and the accuracy of the heat outputs quoted in the literature.
RAL	A European wide colour matching system.
BSP	British Standard Piping.
	The CE marking is the manufacturers declaration that the product meets the requirements of the applicable EC directive. This is applicable to all Henrad products.
	The Manufacturers' Association of Radiators and Convectors.

Notes

|||| HENRAD

STELRAD RADIATOR GROUP



Henrad (UK) Limited, Marriott Road, Mexborough, South Yorkshire S64 8BN.
Telephone: 0844 543 6200 Facsimile: 0844 543 6300

UIN 208863
HPR/5K/0218